

Contents

Velg språk

Drevet av Google

Översetter

Passenger Seat Kit

P/N 2890455

Missing or Damaged Parts

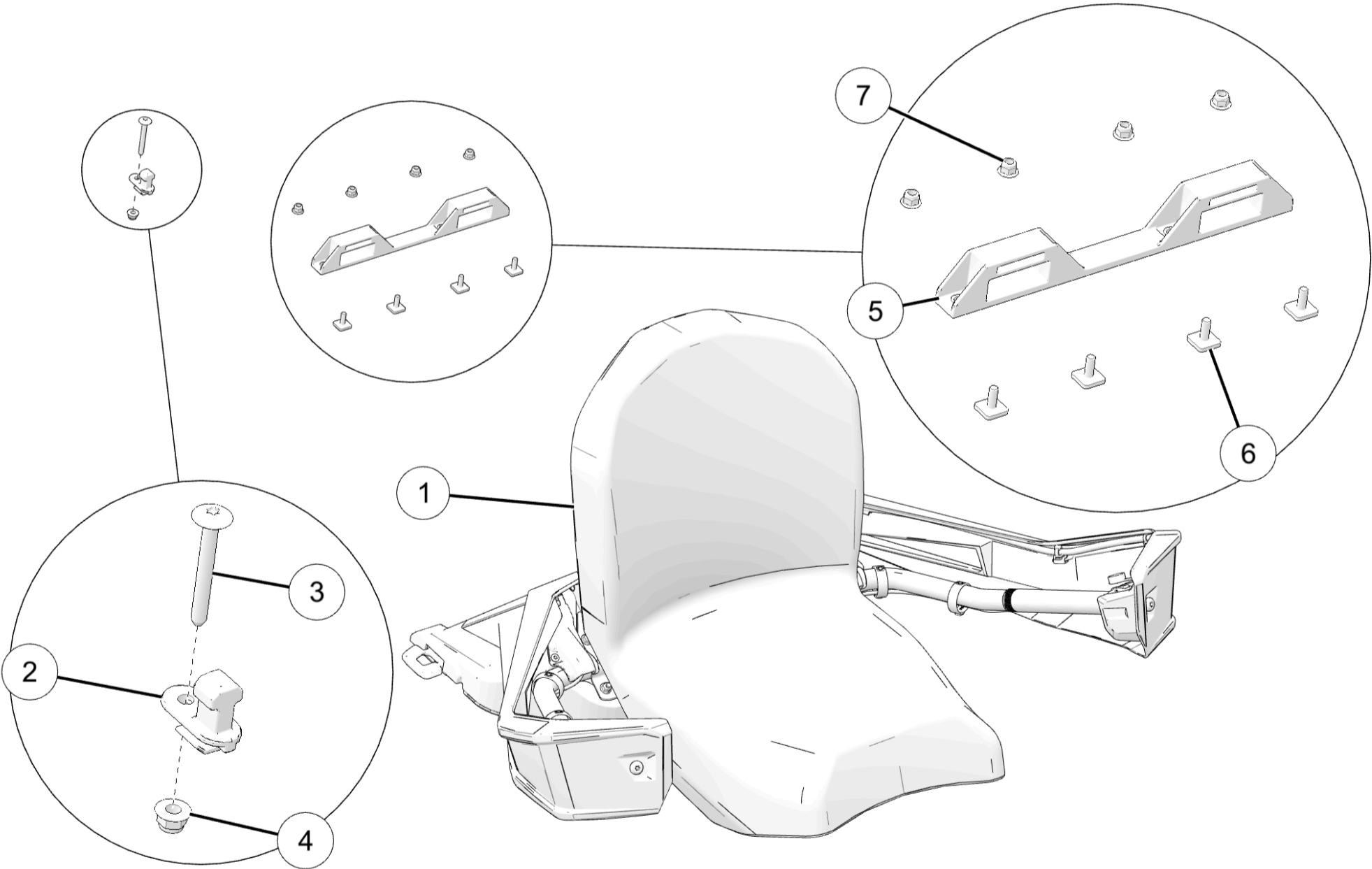
Before beginning assembly, inspect the kit and its component(s) to be sure all parts and tools are accounted for and not damaged. If missing parts or parts are damaged, please contact your Selling Dealer for assistance.

If your accessory was purchased online, please contact POLARIS customer service at **1-800-POLARIS** (US & Canada only).

Application

Verify accessory fitment at [www.polaris.com](http://www.polaris.com).

Kit Contents



Ref	Qty	Part Description	P/N Available Separately
1	1	Passenger Seat Assembly	n/a
2	2	Seat Pin Latch	5145452
3	2	Screw, Torx® Truss Head (M6 x 1.0 x 50 mm)	7519220
4	2	Nut, Hex Flange (M6 x 1.0 mm)	7547453
5	1	Lock & Ride Flex® Seat Support	5465473

Ref	Qty	Part Description	P/N Available Separately
6	4	Screw, Special, (M6 x 1.0 x 16 mm)	7520514
7	4	Nut, Hex Flange, (M6 x 1.0 mm)	7547453

Tools Required

- Safety Glasses
- Screwdriver Set, Torx®
- Torque Wrench

Important

Your Passenger Seat Kit is exclusively designed for your vehicle. Please read the installation instructions thoroughly before beginning. Installation is easier if the vehicle is clean and free of debris. For your safety, and to ensure a satisfactory installation, perform all installation steps correctly in the sequence shown.

Installation Instructions

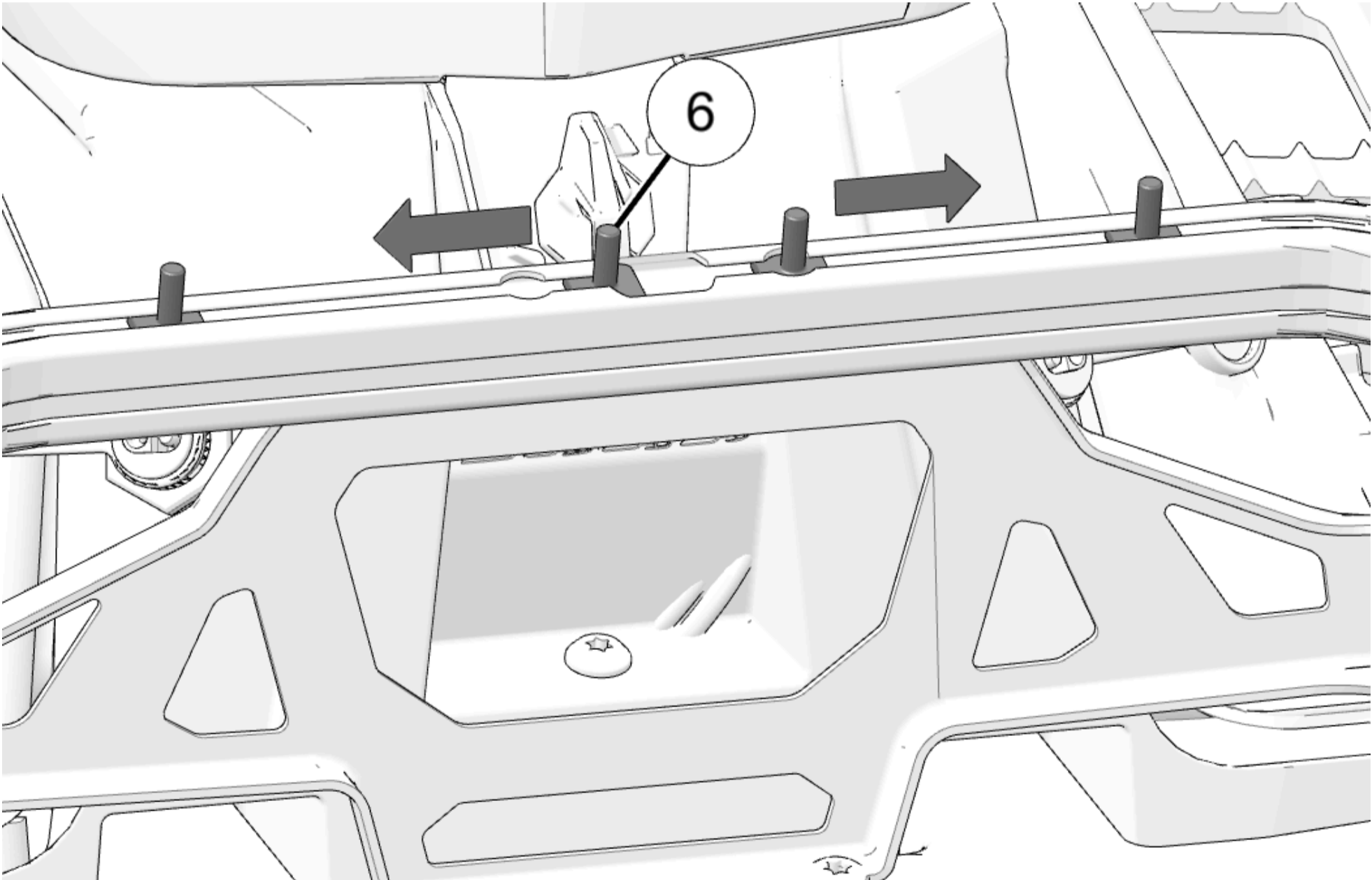
Vehicle Preparation

General

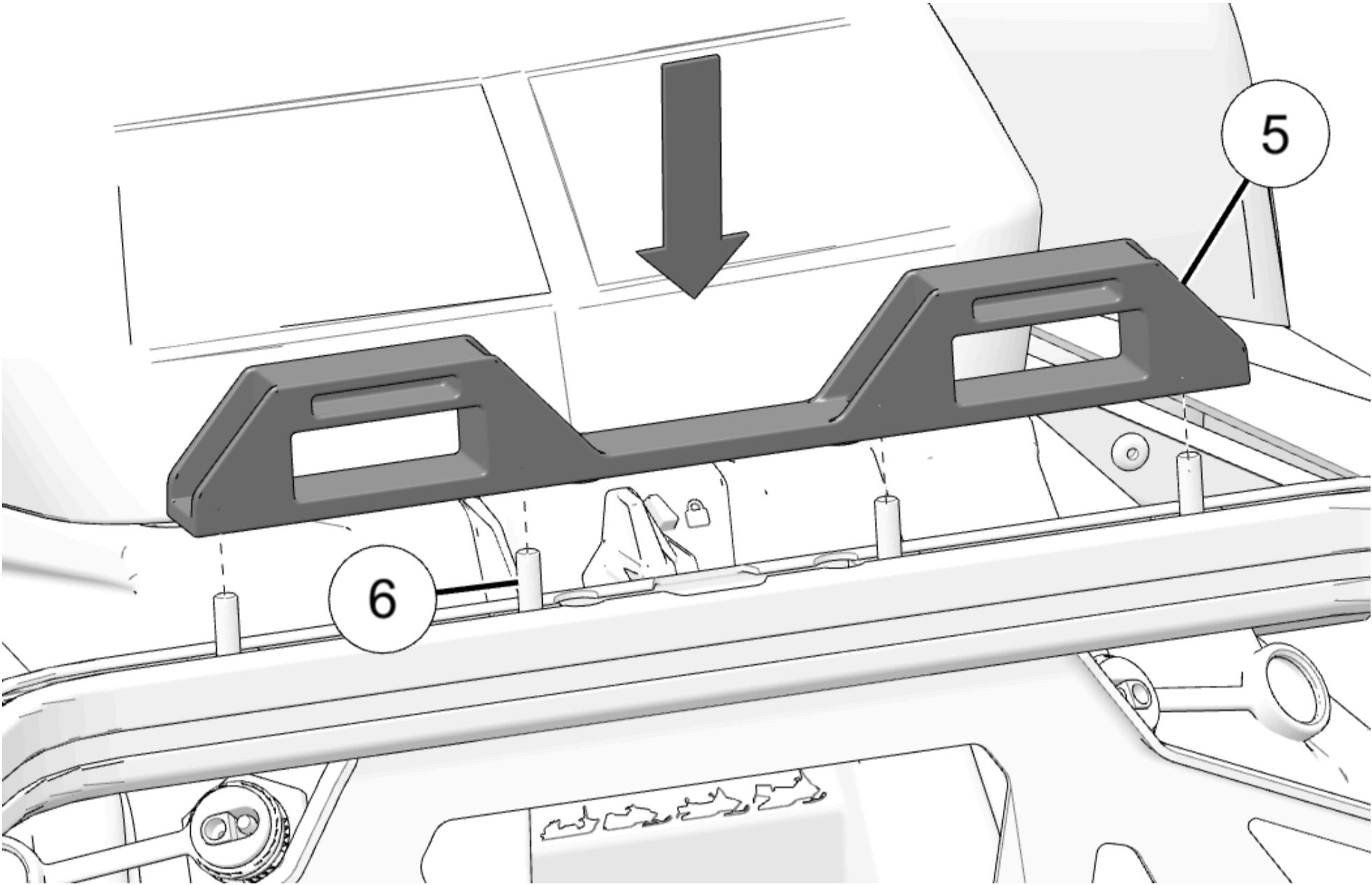
1. Park vehicle on a flat surface.
2. Push engine stop switch to OFF position.
3. Turn key to OFF position and remove key.

Accessory Installation

1. Install four screws ⑥ on front of cargo rack. Move screws to left and right of cargo rack as shown.

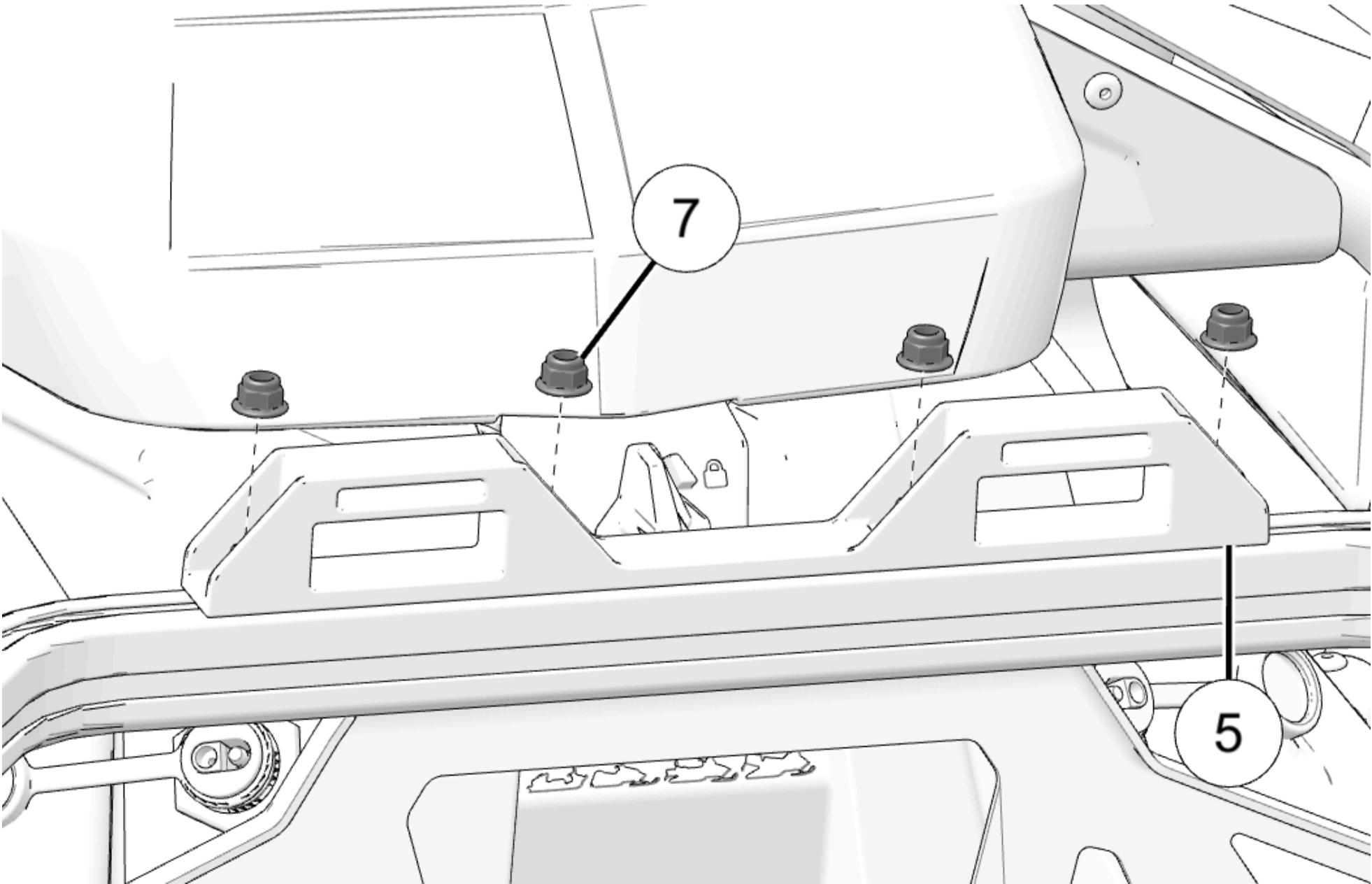


2. Install Lock & Ride Flex® seat support ⑤ on cargo rack using four screws ⑥. Make sure screws are aligned with holes in seat support.

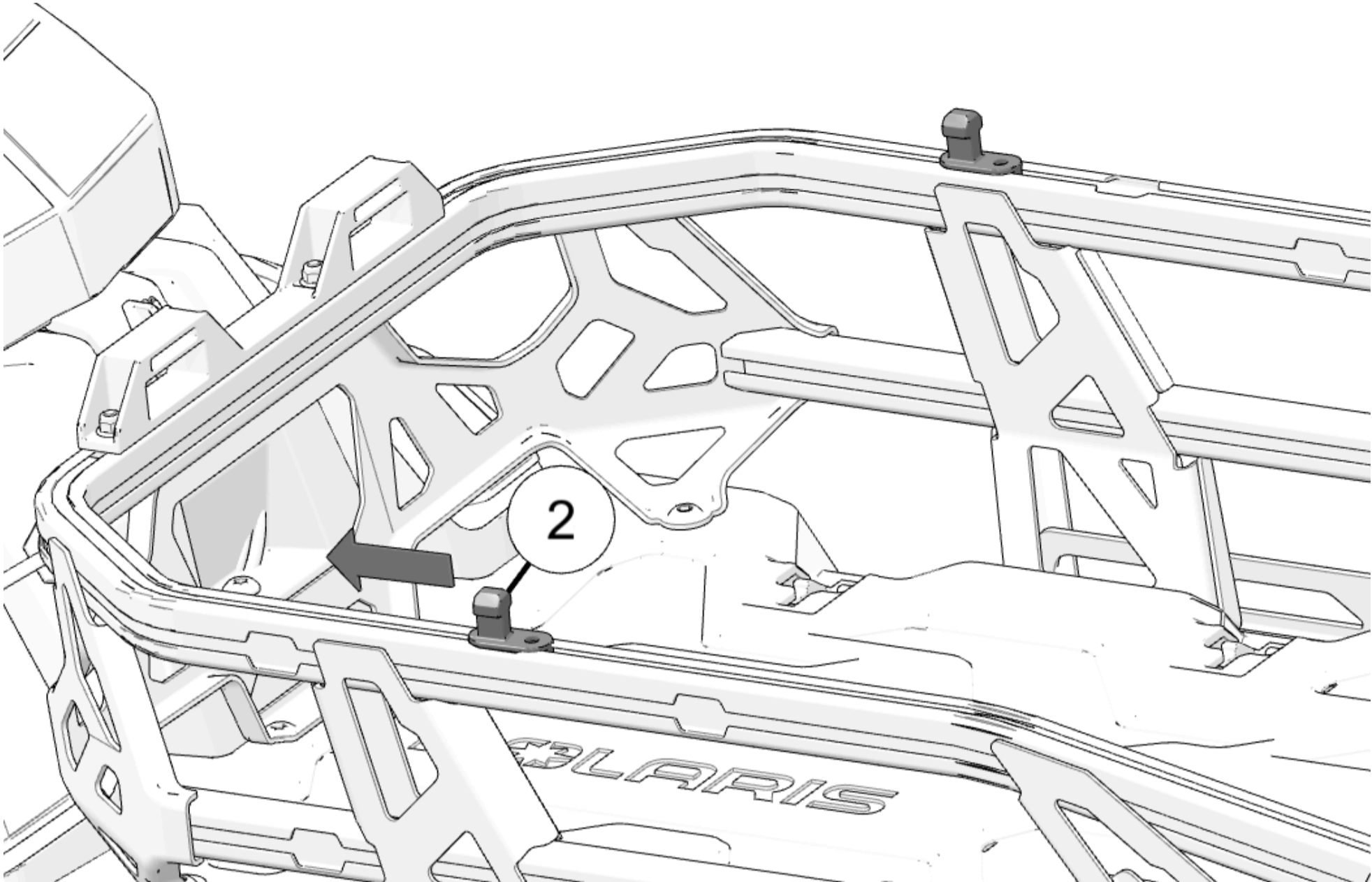


3. Install four nuts (7) to seat support (5). Torque nuts to specification.

TORQUE	
Nuts (7):	
88 in-lbs (10 N·m)	

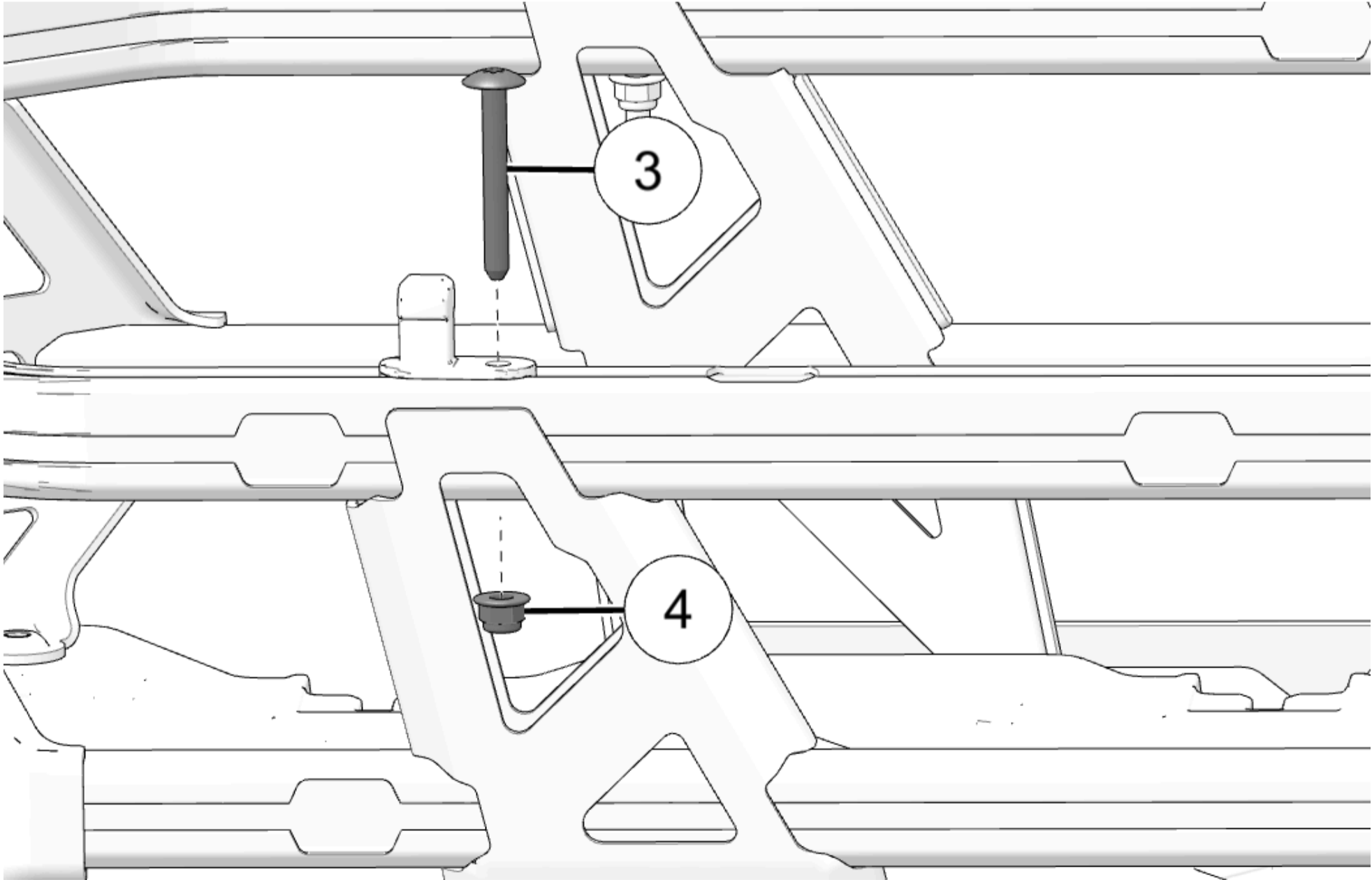


4. Install two seat pin latches (2) in t-slots on cargo rack and move towards front of snowmobile.

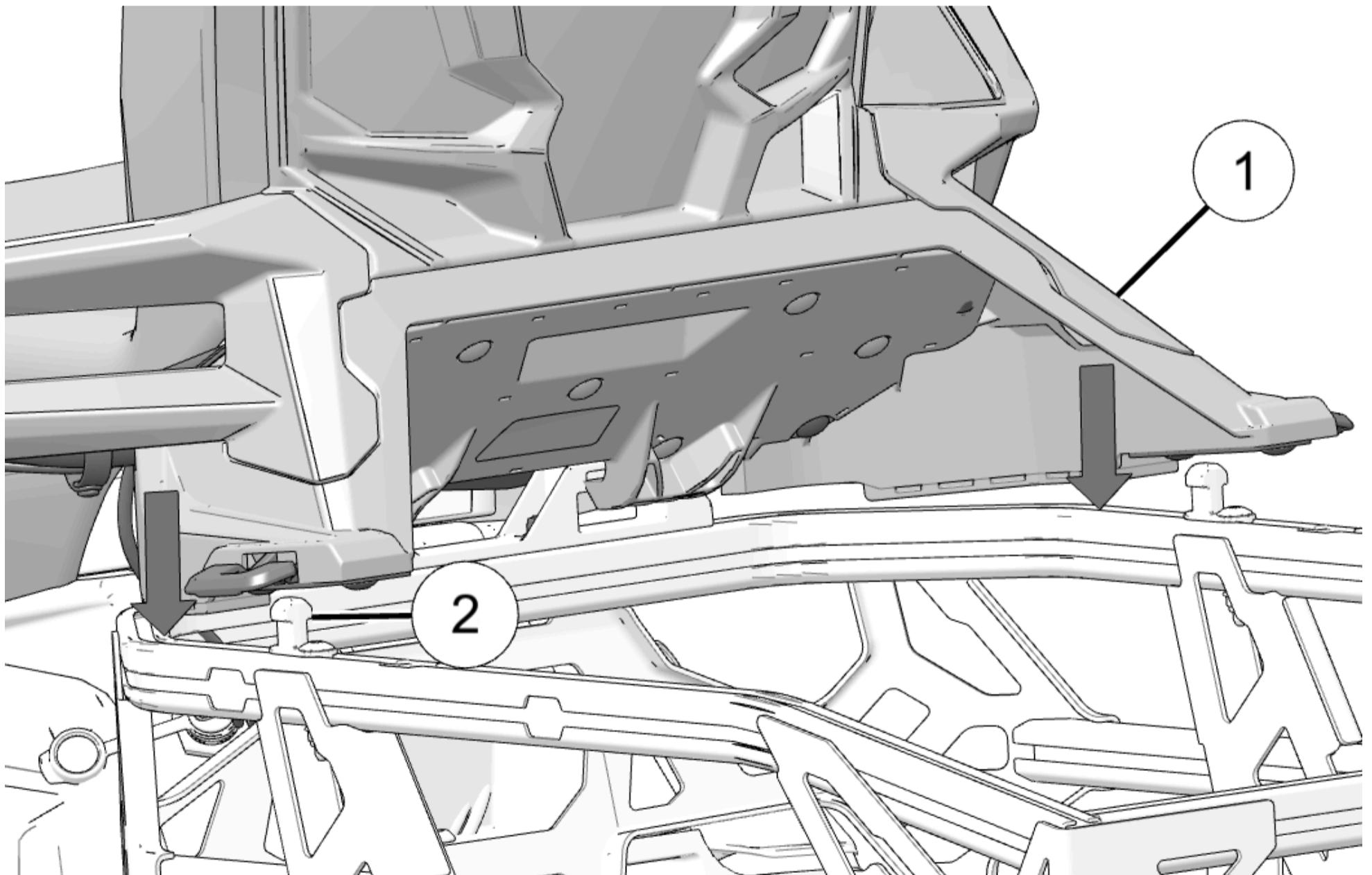
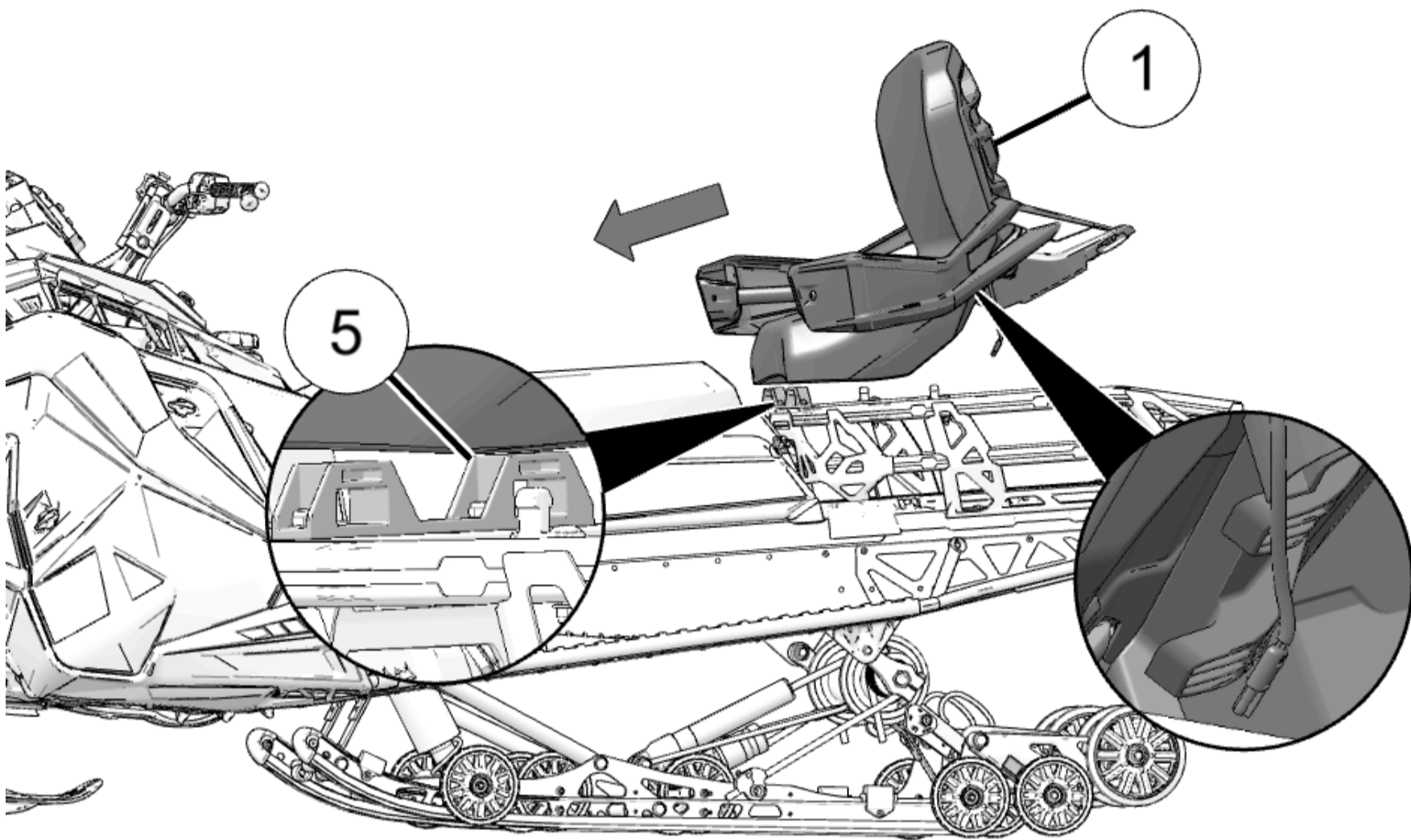


5. Attach seat pin latches to cargo rack using two screws (3) and two nuts (4). Torque nuts to specification.

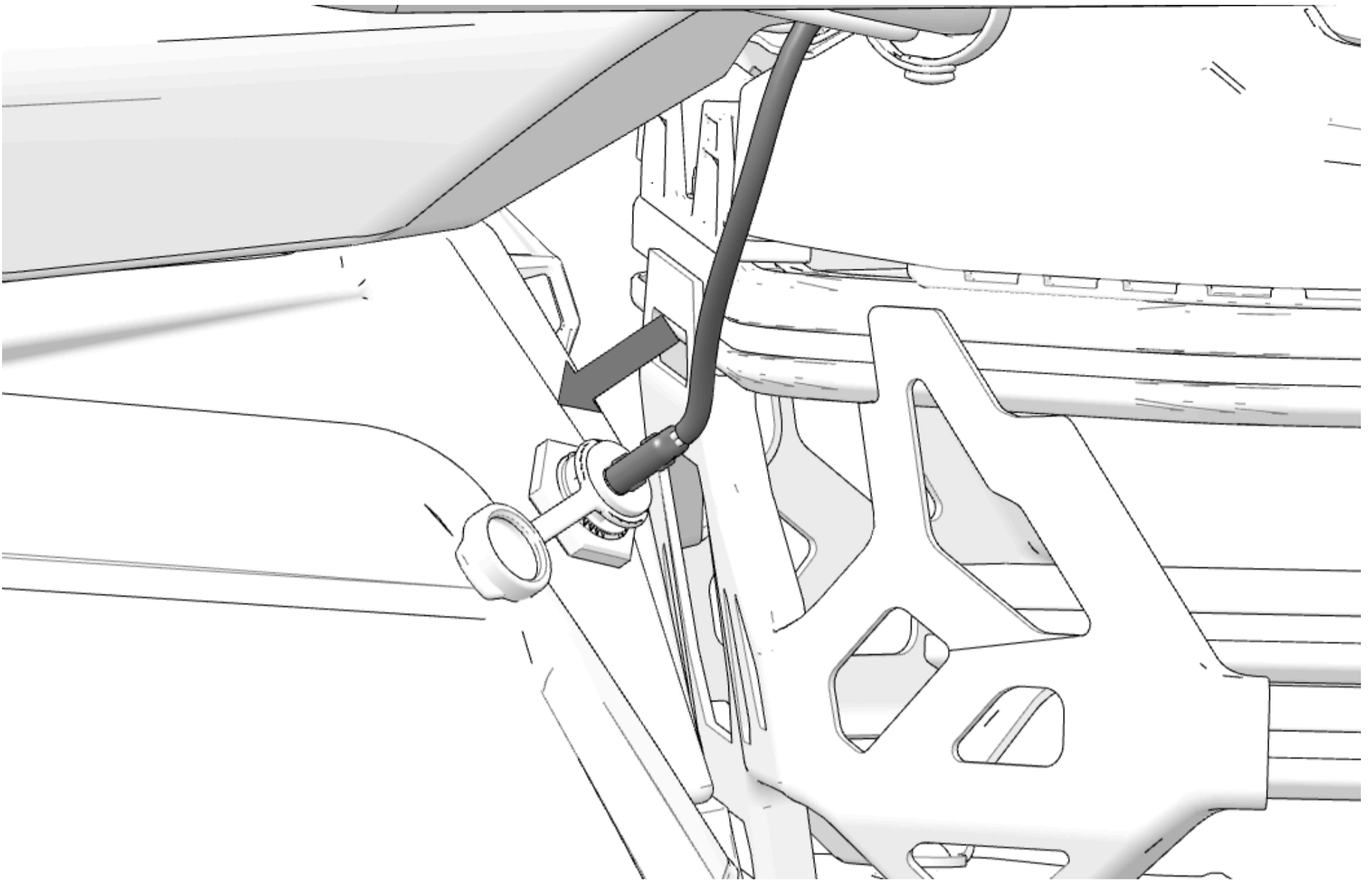
TORQUE	
Nuts (4):	
44 in-lbs (5 N·m)	



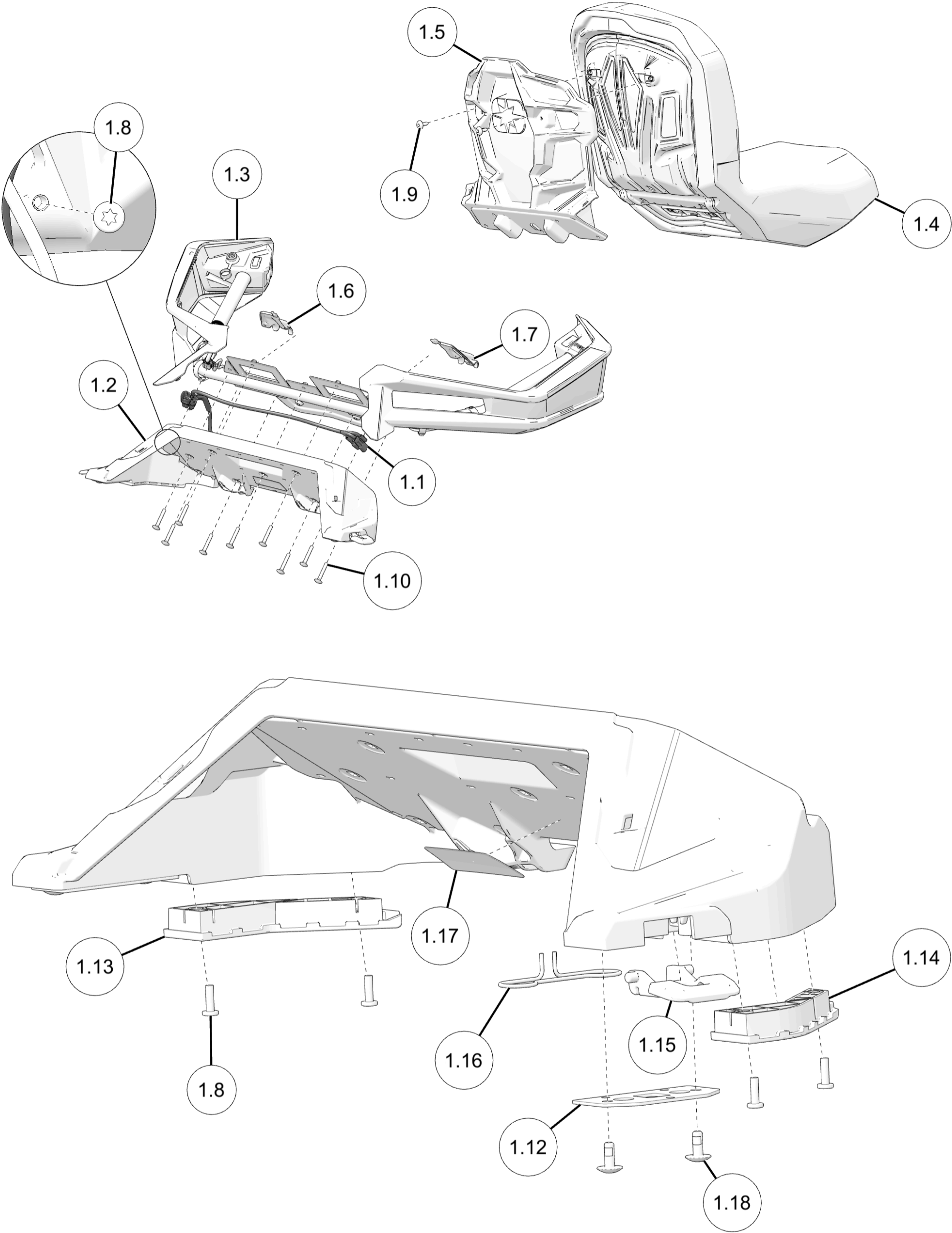
6. Install passenger seat (1) onto Lock & Ride Flex® seat support (5) seat and lower onto seat pin latches (2).



7. Connect passenger seat harness to left side harness plug.



## Service Parts



Ref	Qty	Part Description	P/N Available Separately
1.1	1	Main M2 Harness	2417207
1.2	1	Seat Frame	5465195
1.3	1	Handhold Assembly	2639329

Ref	Qty	Part Description	P/N Available Separately
1.4	1	Passenger Seat Assembly	2692979
1.5	1	Seat Backrest Frame	5465200
1.6	1	Left Wire Cover	5465531
1.7	1	Right Wire Cover	5465532
1.8	6	Screw, Self-Threading, 10 x 5/8 in	7518238
1.9	4	Screw, Torx® Truss Head, (M6 x 1.0 x 20 mm)	7519112
1.10	9	Screw, Round Head Carriage, (M6 x 1.0 x 40 mm)	7528262
1.11	13	Nut, Hex Flange, (M6 x 1.0 mm)	7547453
1.12	2	Seat Plate Housing	5269319
1.13	1	Left Bumper Support	5418740
1.14	1	Right Bumper Support	5418741
1.15	2	Handle Latch	5465184
1.16	2	Seat Latch Spring	7081466
1.17	1	Passenger Seat Decal	7188336
1.18	4	Screw, Torx® Truss Head, (M6 x 1.0 x 15 mm)	7520848

[Site Map](#)

[Privacy Policy](#)

[Accessibility](#)

© 2024 Polaris Inc.